

# WCES 2020

THE 17TH WORLD CONGRESS OF ENDOSCOPIC SURGERY

# JSES 2020

THE 33RD ANNUAL MEETING OF THE JAPAN SOCIETY FOR ENDOSCOPIC SURGERY

# ELSA 2020

IN CONJUNCTION WITH ENDOSCOPIC AND LAPAROSCOPIC SURGEONS OF ASIA



Visit the Past, Imagine the Future  
- Next 30 Years -

**Masafumi Inomata**  
Congress President  
of WCES 2020  
Osaka University

**Masahiko Watanabe**  
President of JSES

**Seigo Kitano**  
Honorary  
President of JSES

**Toshiyuki Mori**  
Congress President  
of ELSA 2020  
Kyorin University

**9 > 12 SEP. 2020**  
WED SAT

**PACIFICO YOKOHAMA, Japan**



Congress Secretariat E-mail: [wces2020@convention.co.jp](mailto:wces2020@convention.co.jp) <http://www2.convention.co.jp/wces2020>



# Greeting

## Congress President, WCES 2020



Dear Colleagues,

In 2020, the Olympic and Paralympic Games will be held in Tokyo. It is a great honor and privilege to host the 17th World Congress of Endoscopic Surgery (WCES) and the 33rd Annual Meeting of the Japan Society for Endoscopic Surgery (JSES) in such a memorable year in Japan.

Our topic for 2020 will be "Visit the Past, Imagine the Future -Next 30 Years-". The Japan Society for Endoscopic Surgery (JSES), promoting technological innovation and scientific verification, has grown into one of the largest endoscopic surgery societies in the world, boasting over 13,000 members. Its characteristics include "an educational system based upon the pioneering world-class skill qualification system," "publication of the International Official Journal to pursue academism," and "monozukuri (manufacturing) based upon medical-engineering collaboration between enterprises and engineering researchers." While fully displaying the characteristics of our society, we will continue to contribute to the development of endoscopic surgery in the future.

We hope the world congress takes an international perspective in exploring and discussing how we can carry on, build on, and innovate from the endoscopic technologies as well as the knowledge and wisdom of those who came before us.

We look forward to seeing you in Yokohama, Japan in 2020.

Yours sincerely,

A handwritten signature in black ink, reading "Masafumi Inomata". The signature is stylized with a large, sweeping 'M' and a long, horizontal stroke at the end.

Masafumi Inomata  
Congress President, WCES 2020

Professor  
Department of Gastroenterological and Pediatric Surgery  
Oita University Faculty of Medicine

# Greeting

## Congress President, ELSA 2020



Dear colleagues and members of ELSA,

I am delighted and honored to have the privilege of welcoming you to the Endoscopic and Laparoscopic Surgeons of Asia (ELSA), to be held on September 11 and 12, 2020 in Yokohama, Japan. This conference will take place in conjunction with the 17th World Congress of Endoscopic Surgery (WCES), hosted by the Japan Society for Endoscopic Surgery (JSES) and the 33rd Annual Meeting of JSES. On behalf of the local organizing committee for ELSA 2020, I would like to extend my warmest welcome to all of you for this Yokohama meeting. It has been more than a decade since Professor Tajiri last hosted ELSA, and I would like to express my deepest gratitude to the Executive Committee members for making this happen.

Since the advent of minimally invasive surgery in the late 1980s, we have been witnessing unparalleled changes in surgical history. Thirty years might be a good time to look over the progress we have made so far, and look to the future. For this, we have set a common theme for ELSA, WCES, and JSES: Visit the Past, Imagine the Future -Next 30 Years-. It would be invaluable if we could discuss not only surgical science, but the socio-economic aspects of minimally invasive treatments.

Yokohama is the second largest city in Japan, a well-known port town with a population of 3.7 million people, first opened to the world for trade in 1859. Yokohama is well known as one of the must-visit places in Japan. The venue of the meeting, Pacifico Yokohama, is located near the largest Chinatown in Japan. The time for the meeting is a week after the Tokyo Olympic and Paralympic Games.

I would be more than happy if you could not only renew your knowledge of surgery, but feel the energy of the city and have a wonderful time in Japan.

I look forward to seeing all of you in Yokohama.

A handwritten signature in black ink that reads "T. Mori". The signature is stylized with a large, looped "T" and a cursive "Mori".

Toshiyuki Mori, MD, FACS

Congress President, ELSA 2020

Department of Surgery, Kyorin University, School of Medicine



# General Information

---

Date : September 9 (WED) - 12 (SAT), 2020

Venue : PACIFICO Yokohama

1-1-1 Minato Mirai, Nishi-ku, Yokohama 220-0012, Japan

Theme : Visit the Past, Imagine the Future - Next 30 Years -

Congress President:

Masafumi Inomata

Congress President of WCES 2020 / JSES 2020

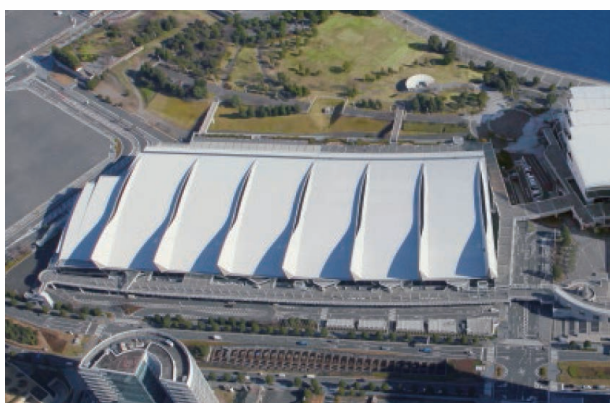
Department of Gastroenterological and Pediatric Surgery

Oita University Faculty of Medicine

Toshiyuki Mori

Congress President of ELSA 2020

Department of Surgery, Kyorin University, School of Medicine



# Program Highlights

---

(As of Nov.1, 2019)

## **TOKYO 2020 Memorial Session**

Olympic Session for Young Surgeons: Imagine the Future  
Olympic Session for Women Surgeons: Imagine the Future

## **TOKYO 2020 Special Program**

### **International Honorary Member Lecture**

### **IFSES Special Program**

Visit the Past: History and Activity of the IFSES

## **Special Program**

Imagine the Future: Learn from the Cadaver Training  
Imagine the Future: Robotic Surgery -Up to date-  
Imagine the Future: 8K Operations -Up to date-

## **Special Symposium**

Imagine the Future: How I do AI/VR?  
What's the similarities, differences (JSES/SAGES/EAES)  
\*This session will be organized by organ.

Symposium, Panel Discussion, Workshop are also planned to the above.  
For details, please check "Scientific Program" on the website.



# Social Events

---

## **Opening Ceremony**

Date : September 9 (WED), 2020  
Time : 15:00 - 16:00 (tentative)  
Venue : Main Hall, PACIFICO Yokohama

## **Welcome Reception - Japan Night -**

Date : September 9 (SAT), 2020  
Time : 17:30 - 19:30 (tentative)  
Venue : Exhibition Hall, PACIFICO Yokohama



# Program Overview

(As of Nov. 1, 2019)

September 9 (WED)	
AM	<p>Symposium/Panel Discussion</p> <p>Workshop/Free Paper</p> <p>Digital Poster Session</p>
PM	<p>Opening Ceremony</p> <p>Special Program</p> <p>Symposium/Panel Discussion</p> <p>Workshop/Free Paper</p> <p>Luncheon Seminar</p> <p>Digital Poster Session</p>
	<p>Welcome Reception - Japan Night -</p>

\*Some sessions will be presented in Japanese.

September 10 (THU)	
AM	<p>Special Program</p> <p>Symposium/Panel Discussion</p> <p>Workshop/Free Paper</p> <p>Digital Poster Session</p>
PM	<p>Presidential Lecture</p> <p>Special Program</p> <p>Symposium/Panel Discussion</p> <p>Workshop/Free Paper</p> <p>Luncheon Seminar</p> <p>Digital Poster Session</p>

# Program Overview

(As of Nov. 1, 2019)

September 11 (FRI)	
AM	Special Program Symposium/Panel Discussion Workshop/Free Paper Digital Poster Session
PM	Presidential Lecture Special Program Symposium/Panel Discussion Workshop/Free Paper Luncheon Seminar Digital Poster Session

September 12 (SAT)	
AM	Symposium/Panel Discussion Workshop/Free Paper Digital Poster Session
PM	Symposium/Panel Discussion Workshop/Free Paper Luncheon Seminar Digital Poster Session

# Call for Abstracts

## Abstract Submission

January 6(MON), 2020 - February 12(WED), 2020

Participants who wish to make scientific contributions are strongly encourage to submit abstracts via the congress website.



The abstract must be written in English and contain a brief, clear statement of conclusion. The abstract body should be approximately 2,000-2,500 characters (about 200-250 words).

There are oral or digital poster presentations.

You may indicate a preference of your presentation at the abstract submission.

Please note that, the decision will be depended on the scientific program committee.

## Oral and Digital Poster Presentation

Category I					
1	Trainee	13	Mediastinum	28	Hernia / Abdominal Wall / Peritoneum
2	Medical Staff in Endoscopic Surgery (Nurse) Safety Management / Anesthesia Assistance / Education/ Others	14	Thoracic Sympathetic Nerve Trunks	29	Obesity / Metabolism
		15	Heart / Great Vessel	30	Pediatric Surgery
3	Medical Staff in Endoscopic Surgery (CE) Safety Management / Maintenance Management/ Others	16	Peripheral Vessel	31	Adrenal Gland
		17	Esophagus Benign	32	Kidney / Ureter
		18	Esophagus Malignity	33	Vesica / Prostate Gland
4	Surgical Equipment and Instruments	19	Stomach (Benign)	34	Other Urological Region
5	Emergency Care	20	Stomach (Malignancy)	35	Uterus
6	Transplantation	21	Small Intestine	36	Ovary
7	Brain / Nerve	22	Large Intestine / Anus (Benign)	37	Other Gynecological Region
8	Thyroid / Cervical Part	23	Large Intestine / Anus (Malignancy)	38	Orthopedic Surgery
9	Mammary Gland	24	Liver	39	Plastic and Reconstructive Surgery
10	Respiratory System (Benign)	25	Gallbladder / Gallbladder Calculus	40	Others
11	Respiratory System (Malignancy)	26	Pancreas		
12	Pneumothorax	27	Spleen		



Category II					
1	Surgical Anatomy	9	Operation Room	17	Day Surgery
2	Indication	10	Virtual Reality Simulation	18	Clinical Pathway
3	Outcomes	11	Navigation Surgery	19	Informed Consent
4	Surgical Techniques	12	Energy Devices	20	Risk Management
5	Complication / Accidental Symptoms	13	Medical Device Management	21	Medical Economics
6	Reduced Port Surgery	14	Medical Materials	22	AI
7	Robotic Surgery	15	Education	23	Others
8	NOTES	16	Endoscopic Surgical Skill Qualification		

## Prizes and Awards

### Travel Grant

To be considered for a grant, an applicant should meet the following requirements:

- Please make sure to click “Travel Grant” checkbox when you submit the abstract.
- Applicant must be 45 years of age or younger at the time of congress (September 9, 2020).
- Statement of your interest in attending and presenting at WCES 2020/JSES 2020/ELSA 2020.

Note:

- 1) Priority will be given to applicants from countries with limited opportunity to attend International Congress/learning activities due to economical disadvantages.
- 2) Once the selection has been approved, applicants will be required to submit the copy of passport and the confirmation letter of the head of department. This letter needs to be signed by the head of department and should state applicant's current work.

For details, please check “Prizes and Awards” on the website.

### Best Presentation Award

The congress will award to the best presenters who give the outstanding presentation. All the applicants who call for any sessions will be subjected to this award.

For details, please check “Prizes and Awards” on the website.



## Registration

Registration Category \ Rates	Super Early	Early	On-site
	December 16 (MON), 2019 – March 31 (TUE), 2020	April 1 (WED) – July 15 (WED), 2020	September 8 (TUE) – 12 (SAT), 2020
IFSES Member *	50,000	60,000	80,000
JSES Member (Doctor)	40,000	50,000	70,000
IFSES Non-member	60,000	70,000	90,000
Resident/Trainee	25,000	25,000	30,000
Medical Staff	15,000	15,000	15,000
Accompanying Person	20,000	20,000	20,000
Student	—	—	0
			※currency: JPY

\*The member of SAGES, CAGS, ALACE, FELAC, ELSA, CSLES, EAES, IAGES or Korean Society of Endoscopic & Laparoscopic Surgeons are IFSES Member.

For details, please check “Registration” on the website.



## Accommodation Facilities

Yokohama has over 14,000 rooms with accommodations of various grades, ranging from five-star to budget hotels. Many are within walking distance of the congress venue.

For details, please check “Accommodation” on the website.





# Tourist Highlights

## Yokohama: Must Visit

### Sankeien Garden

An authentic Japanese garden with an area of 175,000 square meters (1,830,000 square feet), Sankeien Garden is graced by flowers and greenery in every season. A Japanese-style reception hall ("Kakushokaku") has been renovated to give visitors a taste of Japan. Colorful seasonal events and Japanese cultural programs (tea ceremonies, flower arrangement, etc.) can be enjoyed.



### Yokohama Chinatown

Yokohama's Chinatown is the world's largest in scale. It is home to over 500 establishments, including restaurants offering all the major styles of Chinese cuisine and stores selling pastries, cooking ingredients, spices, and even clothing. Pass through any of the brilliantly colored gates, and you will find yourself in a different world—one that is truly Chinese.

### Yamashita Park

Yamashita Park is a kilometer-long stretch along the waterfront and serves as an oasis for residents and tourists alike. The Hikawa-maru, a ship once admired as "The Queen of the Pacific," is moored at the park and is a popular tourist attraction complete with a museum on board. Across the street from the park stands the 106-meter (347-foot) Marine Tower. Once the world's tallest lighthouse, it is now an observatory.



### Red Brick Warehouse / Red Brick Warehouse Park

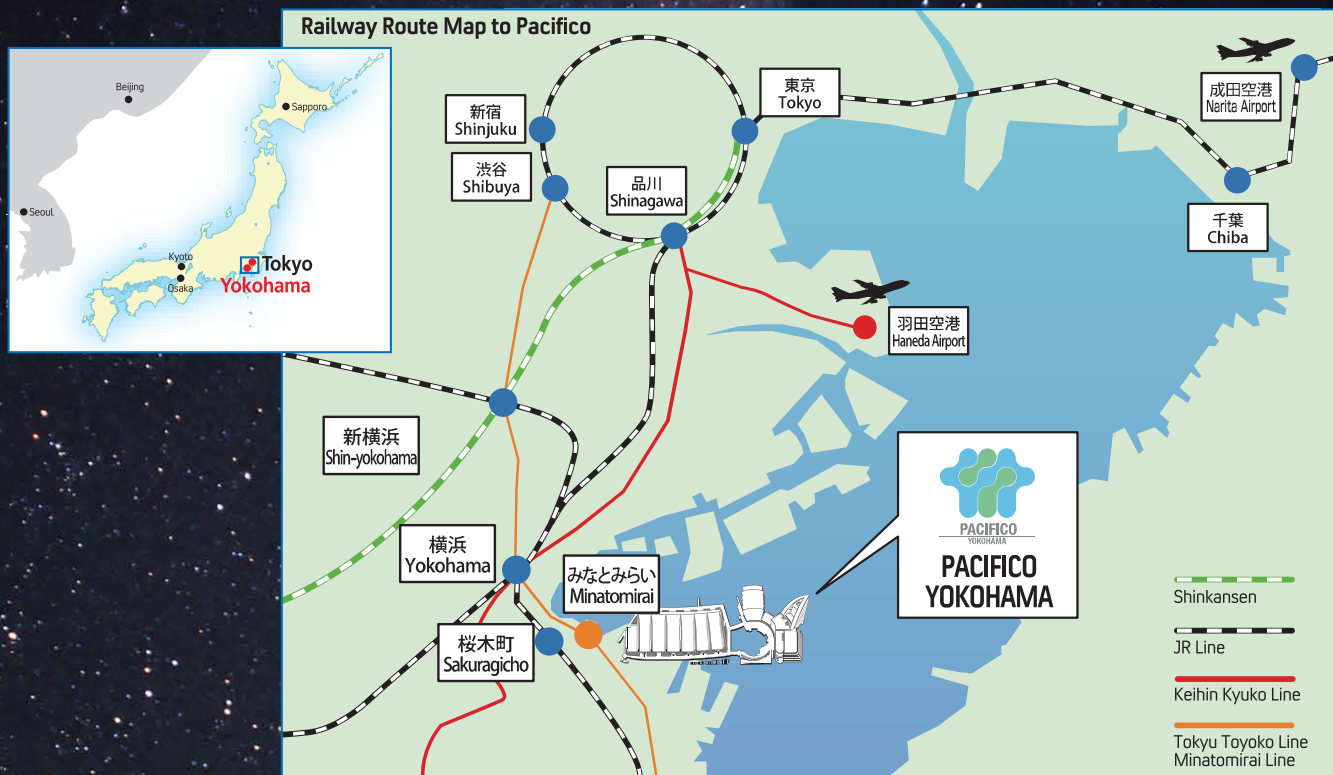
These lovely red brick buildings, with their original hundred-year-old facades, have been refurbished from top to bottom as a shopping mall and multipurpose space for events and exhibitions.

Outside is a park with greenery and trees in which to rest and relax.

### Yokohama Landmark Tower Sky Garden

Enjoy a panoramic view, sweeping 360 degrees from the heart of Tokyo to Mt. Fuji, from an observatory on the 69th floor of the Landmark Tower Building. As Japan's second tallest skyscraper, it soars to a height of 296 meters (971 feet). Situated in the lower levels are a 600-room hotel and a shopping mall with over 200 shops.





By Air	Haneda Airport	Airport Limousine Bus (Direct to PACIFICO YOKOHAMA)			35 min.			
		Airport Limousine Bus	30 min.	by Taxi	7 min.			
	Keikyu Line : Limited Express	24 min.						
	Narita Airport	Airport Limousine Bus (120 min. to PACIFICO YOKOHAMA)	90 min.					
JR Narita Express		90 min.						
By Train	Shibuya Sta.	Tokyu Toyoko Line : Limited Express (Direct link to Minato Mirai Line)	Yokohama Sta. YCAT	Minato Mirai Line	Minato Mirai Sta.	on foot 3 min.		
	Tokyo Sta.	JR Tokaido Line		25 min.			30 min.	
		JR Yokohama Line		3 min.			3 min.	
		JR Yokohama Line		13 min.			10 min.	
	Shin Yokohama Sta.	Yokohama Municipal Subway Blue Line					JR Keihin-Tohoku Line	3 min.
					15 min.	by Bus 7 min.		
						by Taxi 5 min.		

**The 17th World Congress of Endoscopic Surgery (WCES 2020)**  
**The 33rd Annual Meeting of the Japan Society for Endoscopic Surgery (JSSES 2020)**  
**Endoscopic and Laparoscopic Surgeons of Asia 2020 (ELSA 2020)**

c/o Japan Convention Services, Inc.  
 14F, Daido Seimei Kasumigaseki Bldg.,  
 1-4-2 Kasumigaseki, Chiyoda-ku, Tokyo 100-0013 Japan  
 Tel: +81-3-3508-1214 Fax: +81-3-3508-1302  
 E-mail: [wces2020@convention.co.jp](mailto:wces2020@convention.co.jp) [jses33@convention.co.jp](mailto:jses33@convention.co.jp) [elsa2020@convention.co.jp](mailto:elsa2020@convention.co.jp)